

Kirigami UI



Convergent. Responsive. Elegant. Open

About

Harish Navnit <harishnavnit@gmail.com>

Cross-platform software developer

→ **KDE**

* Plasma, Kopete

* Google Summer of Code. 2015, 2016

→ **Spectral Insights**

* Software Integration Engineer

* (C++, Python, Django, Qt/PyQt)

Why Kirigami ?

Why Kirigami ?

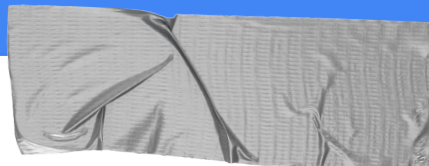
- * “[Kirigami](#) is a Japanese art of papercraft. It is derived from origami, but adds cutting as an additional technique to folding”

Why Kirigami ?

- * “[Kirigami](#) is a Japanese art of papercraft. It is derived from origami, but adds cutting as an additional technique to folding”
- * Different layers or "sheets" in the UI are an important element in it's design philosophy

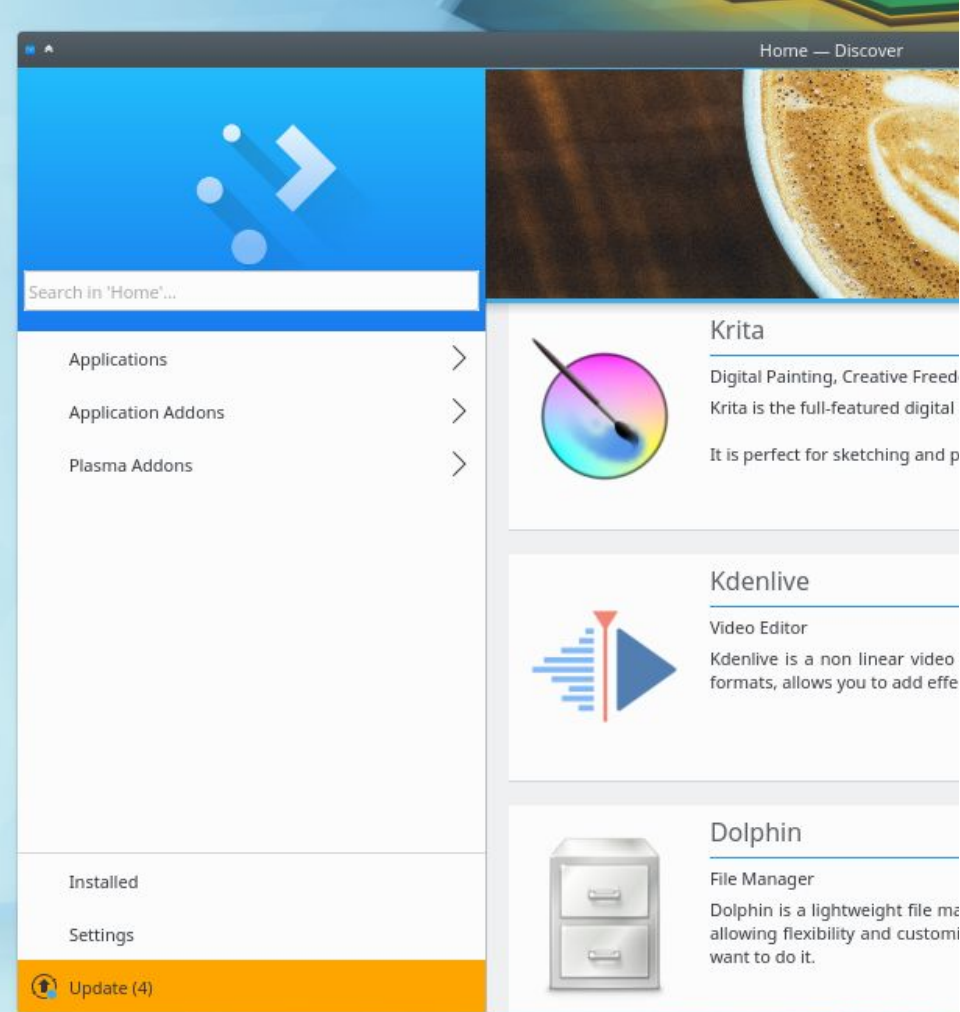
Why Kirigami ?

- * “ [Kirigami](#) is a Japanese art of papercraft. It is derived from origami, but adds cutting as an additional technique to folding ”
- * Different layers or "sheets" in the UI are an important element in it's design philosophy
- * Navigating through screens and the pop up of the drawers are like flicking through sheets of paper.



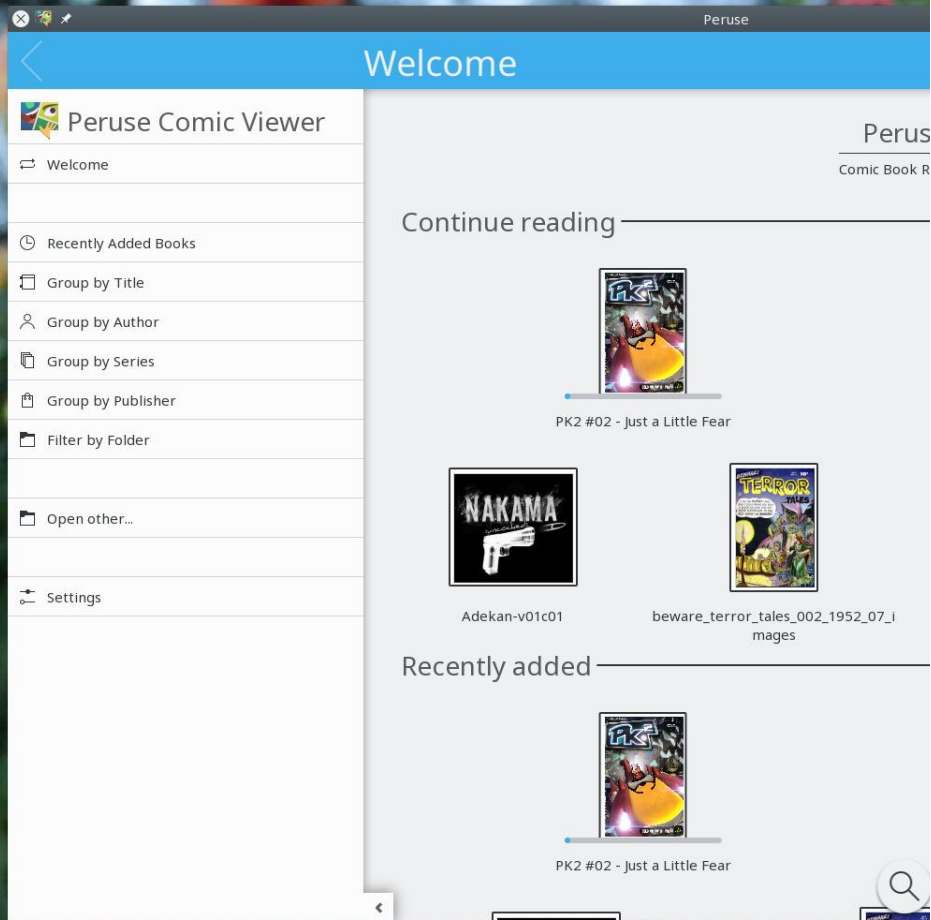
Examples

- **Muon Discover**
KDE's package installer
- **Peruse**
A comic book reader
- **Plasma Publictransport** (WIP)
A simple application that displays public transport timetable data for specific cities



Muon Discover

- KDE's package installer



Peruse

- Comic book reader by KDE

The screenshot displays a Plasma desktop environment. In the foreground, a window titled "Public transport timetable" is open, showing a table of bus arrivals. The table has columns for "no_ruter", "Arrivals", and "mins". The data rows are as follows:

no_ruter	Arrivals	mins
301	Oslo Bussterminal	4 mins
301	Oslo Bussterminal	4 mins
301	Oslo Bussterminal	4 mins
321	Lillestrøm terminal	7 mins
321	Lillestrøm terminal	7 mins
321	Lillestrøm	7 mins
FB2	Oslo sentrum	10 mins
FB2	Oslo sentrum	10 mins
500	Oslo	20 mins
500	Oslo	20 mins
36E	Fornebu ekspress	20 mins
FB2	Oslo sentrum	20 mins
36E	Fornebu ekspress	20 mins
500	Oslo	20 mins
302	Oslo Bussterminal	22 mins

The application has a sidebar with menu items: "Stops", "Locations", "Alarms", and "Service Providers". In the background, a code editor window is visible, showing a file named "wip/kirigami [ed3a03c] modified untracked" and a code editor with "Line: 87 Col: 31".

Plasma Public Transport (WIP)

- Application to relay public transport timetable data.

Main Components

- `ApplicationWindow`
- `Action`
- `GlobalDrawer`
- `ContextDrawer`
- `OverlayDrawer`
- `Page`
- `ScrollablePage`
- `OverlaySheet`
- `Theme`
- `Units`
- `Icon`
- `BasicListItem`
- `AbstractApplicationHeader`
- `AbstractApplicationWindow`
- `AbstractListItem`
- `ApplicationHeader`
- `BasicListItem`
- `SwipeListItem`
- `Heading`
- `Label`

Main Components

- **ApplicationWindow** ————— Root QML component
- **Action**
- **GlobalDrawer**
- **ContextDrawer**
- **OverlayDrawer**
- **Page**
- **ScrollablePage**
- **OverlaySheet**
- **Theme**
- **Units**
- **Icon**
- **BasicListItem**
- **AbstractApplicationHeader**
- **AbstractApplicationWindow**
- **AbstractListItem**
- **ApplicationHeader**
- **BasicListItem**
- **SwipeListItem**
- **Heading**
- **Label**

Main Components

- **ApplicationWindow**
- **Action**
- **GlobalDrawer**
- **ContextDrawer**
- **OverlayDrawer**
- **Page**
- **ScrollablePage**
- **OverlaySheet**
- **Theme**
- **Units**
- **Icon**
- **BasicListItem**
- **AbstractApplicationHeader**
- **AbstractApplicationWindow**
- **AbstractListItem**
- **ApplicationHeader**
- **BasicListItem**
- **SwipeListItem**
- **Heading**
- **Label**

A global *menubar* for the application

Main Components

- **ApplicationWindow**
- **Action**
- **GlobalDrawer**
- **ContextDrawer**
- **OverlayDrawer**
- **Page**
- **ScrollablePage**
- **OverlaySheet**
- **Theme**
- **Units**
- **Icon**
- **BasicListItem**
- **AbstractApplicationHeader**
- **AbstractApplicationWindow**
- **AbstractListItem**
- **ApplicationHeader**
- **BasicListItem**
- **SwipeListItem**
- **Heading**
- **Label**

List of actions that are specific to the current page shown by the application

Main Components

- `ApplicationWindow`
- `Action`
- `GlobalDrawer`
- `ContextDrawer`
- `OverlayDrawer`
- `Page`
- `ScrollablePage`
- `OverlaySheet`
- `Theme`
- `Units`
- `Icon`
- `BasicListItem`
- `AbstractApplicationHeader`
- `AbstractApplicationWindow`
- `AbstractListItem`
- `ApplicationHeader`
- `BasicListItem`
- `SwipeListItem`
- `Heading`
- `Label`

Additional UI elements needed for small secondary tasks for which the main UI elements are not needed.

Main Components

- `ApplicationWindow`
- `Action`
- `GlobalDrawer`
- `ContextDrawer`
- `OverlayDrawer`
- `Page`
- `ScrollablePage`
- `OverlaySheet`
- `Theme`
- `Units`
- `Icon`
- `BasicListItem`
- `AbstractApplicationHeader`
- `AbstractApplicationWindow`
- `AbstractListItem`
- `ApplicationHeader`
- `BasicListItem`
- `SwipeListItem`
- `Heading`
- `Label`

————— Page is a container for all the app pages

Main Components

- `ApplicationWindow`
- `Action`
- `GlobalDrawer`
- `ContextDrawer`
- `OverlayDrawer`
- `Page`
- `ScrollablePage`
- `OverlaySheet`
- `Theme`
- `Units`
- `Icon`
- `BasicListItem`
- `AbstractApplicationHeader`
- `AbstractApplicationWindow`
- `AbstractListItem`
- `ApplicationHeader`
- `BasicListItem`
- `SwipeListItem`
- `Heading`
- `Label`

Sheet that covers the current page content.

Main Components

- **ApplicationWindow**
- **Action**
- **GlobalDrawer**
- **ContextDrawer**
- **OverlayDrawer**
- **Page**
- **ScrollablePage**
- **OverlaySheet** _____
- **Theme**
- **Units**
- **Icon**
- **BasicListItem**
- **AbstractApplicationHeader**
- **AbstractApplicationWindow**
- **AbstractListItem**
- **ApplicationHeader**
- **BasicListItem**
- **SwipeListItem**
- **Heading**
- **Label**

Sheet that covers the current page content.

- Its contents can be scrolled up or down, scrolling all the way up or all the way down, dismisses it

Main Components

- **ApplicationWindow**
- **Action**
- **GlobalDrawer**
- **ContextDrawer**
- **OverlayDrawer**
- **Page**
- **ScrollablePage**
- **OverlaySheet** _____
- **Theme**
- **Units**
- **Icon**
- **BasicListItem**
- **AbstractApplicationHeader**
- **AbstractApplicationWindow**
- **AbstractListItem**
- **ApplicationHeader**
- **BasicListItem**
- **SwipeListItem**
- **Heading**
- **Label**

Sheet that covers the current page content.

- Its contents can be scrolled up or down, scrolling all the way up or all the way down, dismisses it
- Used for big, modal dialogs or information display, even potentially taller than the screen space

Public transport timetable

Public Transport

- Stops
- Locations
- Alarms
- Service Providers

no_ruter	Listad	Departures
420	Vinstrahallen	7 hours
405	Vinstrahallen	7 hours
424	Vinstrahallen	7 hours
142	Lillehammer	7 hours
142	Lillehammer	7 hours
405	Sørdorptunet	9 hours
142	Lillehammer	9 hours
142	Lillehammer	9 hours
142	Lillehammer	9 hours
142	Lillehammer	9 hours

no_ruter	Listad	Departures
420	Vinstrahallen	7 hours
405	Vinstrahallen	7 hours
424	Vinstrahallen	7 hours
142	Lillehammer	7 hours
142	Lillehammer	7 hours
405	Sørdorptunet	9 hours
142	Lillehammer	9 hours
142	Lillehammer	9 hours
142	Lillehammer	9 hours
142	Lillehammer	9 hours

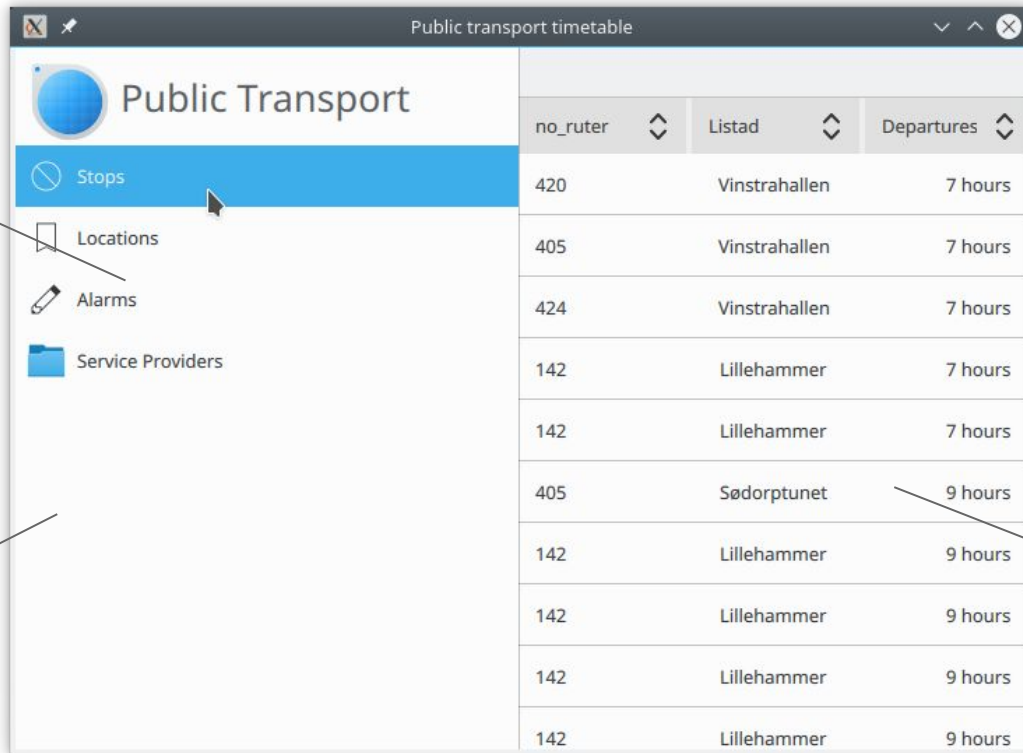
Global drawer

Action

The screenshot shows a window titled "Public transport timetable". On the left is a "Global drawer" with a blue header "Public Transport" and a list of menu items: "Stops" (highlighted in blue), "Locations", "Alarms", and "Service Providers". On the right is a table with three columns: "no_ruter", "Listad", and "Departures". The table contains 12 rows of data.

no_ruter	Listad	Departures
420	Vinstrahallen	7 hours
405	Vinstrahallen	7 hours
424	Vinstrahallen	7 hours
142	Lillehammer	7 hours
142	Lillehammer	7 hours
405	Sødorptunet	9 hours
142	Lillehammer	9 hours
142	Lillehammer	9 hours
142	Lillehammer	9 hours
142	Lillehammer	9 hours
142	Lillehammer	9 hours

Global drawer



Action

Global drawer

Kirigami.BasicListItem

Public transport timetable

Public Transport

Stops

Locations

Alarms

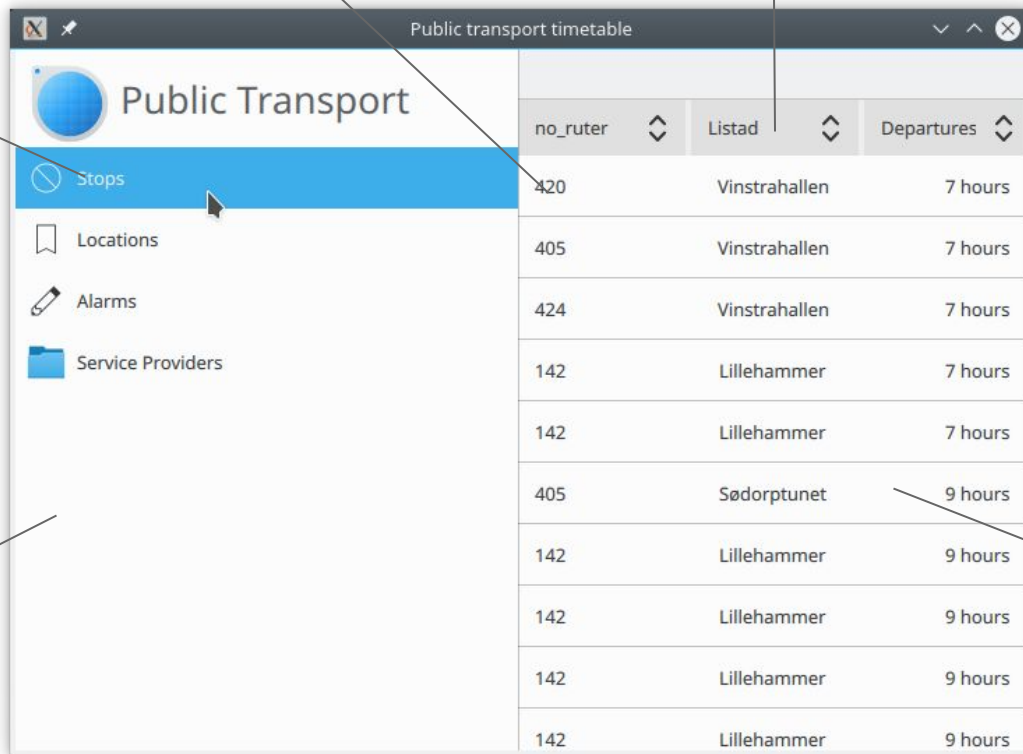
Service Providers

no_ruter	Listad	Departures
420	Vinstrahallen	7 hours
405	Vinstrahallen	7 hours
424	Vinstrahallen	7 hours
142	Lillehammer	7 hours
142	Lillehammer	7 hours
405	Sørdorptunet	9 hours
142	Lillehammer	9 hours
142	Lillehammer	9 hours
142	Lillehammer	9 hours
142	Lillehammer	9 hours
142	Lillehammer	9 hours

QtQuick.Controls.Label

QtQuick.Controls.ComboBox

Action



Global drawer

Kirigami.BasicListItem

Hello World ?

Hello World ?

<https://paste.kde.org/pjzdahkho>

Questions ?

Questions ?

kde-devel@kde.org
plasma-devel@kde.org

#plasma

Development channel for
all things Plasma

E-mail

IRC

#kde-devel

General KDE wide
development channel.
You'll most likely be
re-routed to **#plasma**

#kde-publictransport

Development of the Public
transport application.
Ping @sho_(Eike, active) or
@rharish(me, dormant)